

## New Caledonia **Capability**

Locally  
invested

Regional  
knowledge  
and expertise

Partnership





**20**  
years

**10+**  
employees

**15+**  
clients

**100+**  
projects

**30K**  
engineering  
hours

For over 30 years, and with 20 years in New Caledonia, Beca has been proudly supporting island nations in the development of engineering service and project delivery suited to the local environment. We're passionate about making a difference, delivering projects in a way that's appropriate to the Pacific and local communities. Where technical skills are required, we can tap into our network from anywhere in the world to collaborate and solve client issues in real time.

## Talk to us about...



### PROCESS

- Project and engineering delivery
- Sustainability and environmental services
- Material handling
- Shutdowns and asset management
- Operational excellence
- Logistics
- Technology services, digital transformation and analytics



### STRUCTURAL

- Port infrastructures
- Civil engineering
- Building design
- Environmental
- Airport Construction Services
- Roading design



### ADVISORY SERVICES

- EPCM feasibility studies
- Food and Beverage
- Supply chain
- Manufacturing



### NATURAL RESOURCE MANAGEMENT

- Renewable Energy
- Transmission and Distribution
- EMC Earthing
- Water Resources Management
- Desalination Water
- Wastewater
- Stormwater



### DIGITAL

- Covid digital solutions
- Digital twins
- Industry 4.0
- Data management
- Augmented reality

🔥 Our clients do incredible things every day. They are shaping communities and changing lives through the infrastructure they create, the products they manufacture, the services they provide and the families they support. And we are right alongside them.



# Mining and Metals

The mining and metals ecosystem continues to evolve and become more complex as we forge ahead into the future. We will work with you to understand the impact of key drivers like digitisation, automation and carbon emissions and draw on our knowledge and experience to deliver sustainable mining solutions that help reduce overall costs.

When it comes to digitisation, we can help you understand how emerging technologies can have an impact on the future of mining from efficient data collection, spatial data visualisation, mine safety through to operational efficiency.

## Digital in action

We can help bring your assets to life across the full value chain and build [cool visual solutions](#)

### Talk to us about

- Integrated analytics solution
- Digital asset models
- GIS services



## NHC Production – Vale New Caledonia

### What we've done

We've helped Vale, New Caledonia increase their production capacity of Nickel Hydroxide Cake (NHC), bringing the initial part of the project to successful commissioning.

### Outcomes

- Increased production capacity
- Reduced operational costs
- New bagging system, container loading area

### Services we've provided

- Project management
- Logistics and operations
- Shutdown management



## Project Société Le Nickel – Shaking Baghouse Project

### What we've done

Undertook study at the site to look at options for cleaning up of the off-gasses from the ferro nickel de-sulphurisation 'shaking stations' at their smelter site.

### Outcomes

- Improved air quality at smelter
- 2x 50 metre high stacks re-fit
- Live environment work completion, zero safety incidents

### Services we've provided

- Civil engineering
- Engineering, procurement and construction management
- Structural engineering



# Infrastructure

Climate change as a major environmental issue is not only reserved for developed countries, in-fact Pacific islands are amongst those extremely vulnerable to its effects.

For over 30 years, we have worked with clients in the Pacific, delivering sustainable infrastructure projects essential to everyday life that include port upgrades, new building designs through to airport refurbishments.

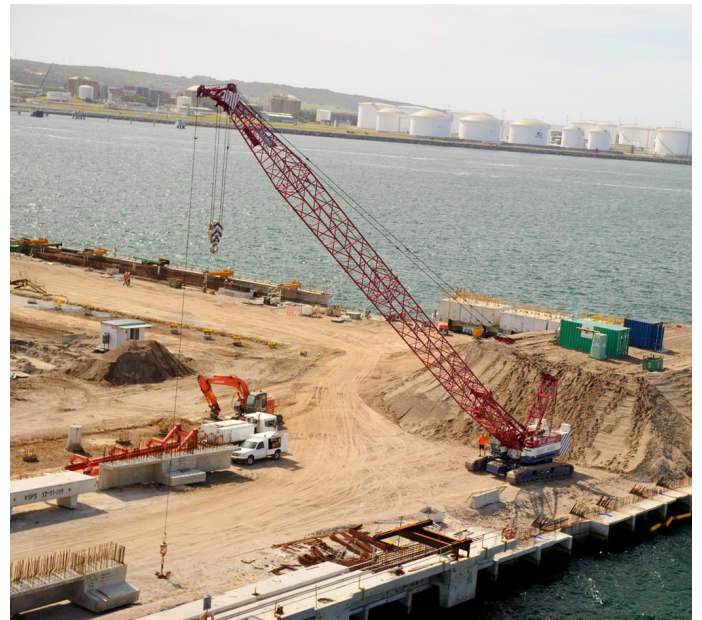
💡 We'll work with you to find solutions that help to future proof your infrastructure.

## Digital in action

Here to connect and integrate different elements in a cohesive "whole" to enhance your assets and operations

### Talk to us about

- Ecosystems consulting & technical services
- Delivery and transformation advisory
- GIS infrastructure master planning
- Systems integration
- Industry 4.0



## Airports in the Pacific

### What we've done

We've worked on some incredibly important airport projects in the Pacific including the design and delivery of the new runway at Majuro Atoll, Marshall Islands and the Air Calin hangar extension project.

### Outcomes

- Improved air traffic safety
- Environmental Impact Assessment
- Complex stakeholder management
- Design and Construction management

### Services we've provided

- Stakeholder consultation
- Construction management
- Environmental assistance

## Port Botany Extension – Sydney, Australia

### What we've done

Assisted Sydney Ports looking to expand their existing container terminal and introduce a third terminal operator, in order to meet rising demands in container trade and increased competition.

### Outcomes

- 60ha new container terminal area
- 1850m of additional wharves with five new shipping berths
- Dedicated road and bridge access

### Services we've provided

- Structural Verification
- Seismic Design Verification
- Navigational Aid Verification
- Constructability and Construction Monitoring



# Light industry

Globally, industrial markets are under pressure to find smarter, sustainable and more efficient ways of operating and delivering. We realise industrial infrastructure is aging; operational costs are on the rise and there's a lack of proper resources and specialist skills.

A lot of businesses in the region rely on cold storage facilities which means striking the right balance between investment costs and on-going operations becomes critical. We will work alongside you to identify new opportunities across all aspects of your operations. And once we've got good oversight, we can help optimise your asset performance, enhanced through our digital capability.

## Digital in action

### Talk to us about Maestro

A lean operational solution to reduce your cold storage energy usage, with seamless plug and play capability.

🔥 Here to make everyday better, we will work with you to get the best out of your assets. We take an integrated asset lifecycle approach and can help you with anything from asset condition assessment, asset strategy and management planning, data analytics, cost management, through to whole of life and lifecycle costing.



## Woolworths Distribution Centre upgrade, Larapinta

### What we've done

Worked on-site as design managers and lead consultants to design a highly efficient high-rise ambient storage area at the regional facility at Larapinta, South East Queensland.

### Outcomes

- Modern cold-storage facilities
- 43,000m2 high-rise ambient storage facility
- PIR wall and ceiling construction

### Services we've provided

- Architectural and Refrigeration Engineering
- Project management
- Detailed design development



## South Pacific Brewery – major site capacity upgrades Papua New Guinea

### What we've done

Commissioned by Heineken to develop a Project Data Book (PDB) to support staged major site upgrades over a five-year period.

### Outcomes

- Two major site capacity upgrades
- \$295million Project value in Kina (NZD 130M)
- EPCM Delivery Services

### Services we've provided

- Project management
- Masterplanning
- Packaging Technology



# Utilities

The New Caledonian utilities market is transforming. The carbon challenge, stakeholder engagement, climate change adaptation, and new technologies are just some of the factors at play.

Our advisory, engineering, asset management and project management teams will work with you to understand your project drivers and advise on how best to deliver infrastructure and services that achieve safe, sustainable, resilient and quality outcomes for the growing communities.

## Digital in action

Thinking of creating digital experiences to support your complex environments and boost engagement, safety and effectiveness? Get in touch!

### Talk to us about

- Immersive training and simulation
- Immersive in-field solutions
- AI engagement



## Baselining carbon footprint PT Vale, Indonesia

### What we've done

Established a carbon footprint baseline 'GHG inventory' for the PT Vale Sorowako operation in accordance with ISO 14064. This assessment allowed our client to understand where emissions reduction initiatives could be directed to support meeting corporate targets.

### Outcomes

- Greenhouse gas inventory
- Established carbon footprint baseline
- Compliance with ISO 14064

### Services we've provided

- Sustainable development
- Organisational carbon footprint
- Environmental management



## Mobil Ducos Bunding Design New Caledonia

### What we've done

Provided front end and detailed engineering design services for upgrades of the Ducos terminal in Noumea.

### Outcome

- Increased bund volumes
- Review of existing drawings for depot and Mobil's standard practice documents, in accordance to French/New Caledonian standards
- Designed new impermeable lining for the entire depot

### Services we've provided

- Front end services
- Logistics and Operations
- Detailed engineering design



# Beca

Beca is one of Asia Pacific's largest, most innovative and progressive employee-owned professional services consultants offering market leading engineering, technical and advisory services. We help our clients shape communities and optimise their assets and operations in multiple global markets.

Proudly employee-owned, Beca has grown from its genesis in 1918 into one of the largest and most diverse engineering and related consultancy services companies in the Asia-Pacific region. Beca is a hands-on professional services firm that helps our clients transform themselves and the world around them.

**Our vision** is Creative people together transforming our world.

**Our purpose** is to make every day better, and we aim to create value through strong relationships, exceptional service, and a values-driven culture.

# What is our why?

## Our values

We have a values-driven approach and culture that guides how we work with you.



### PARTNERSHIP

We value enduring relationships with our clients, communities and colleagues across the globe. Ownership, trust and integrity are fundamental to our teamwork.



### TENACITY

We stick by our clients, seek to understand all the issues and deliver successful outcomes. Our attitude, technical skills and systems empower innovation.



### ENJOYMENT

We embrace our differences, celebrate our achievements and personal growth and have fun along the way. We thrive on challenges and take pride in what we deliver.



### CARE

We have the courage to make a difference and to not let each other down. Respect for each other, our clients, the environment and our communities empowers us to deliver a safer and more sustainable future.







## Visit us

Beca Nouvelle-Calédonie  
7 Bis Rue de Suffren  
Immeuble "Le Kariba"  
Quartier Latin, 98800  
Nouméa, BP 14141



**Frederic Poujade**  
Country Manager  
+687 797 227 [frederic.poujade@beca.com](mailto:frederic.poujade@beca.com)



**Hugues Danis**  
Associate – Project Manager  
+ 687 76 13 04 [hugues.danis@beca.com](mailto:hugues.danis@beca.com)



**Aymeric Levasseur**  
Senior Associate – Project Management  
+ 687 74 56 20 [aymeric.levasseur@beca.com](mailto:aymeric.levasseur@beca.com)

- [linkedin.com/company/beca](https://www.linkedin.com/company/beca)
- [twitter.com/becagroup](https://twitter.com/becagroup)
- [facebook.com/BecaGroup](https://facebook.com/BecaGroup)

**Australia** Brisbane | Sydney | Canberra | Melbourne **Asia** Myanmar | Thailand | Singapore | Indonesia **New Zealand** Auckland | Hamilton | Tauranga | New Plymouth | Palmerston North | Nelson | Wellington | Christchurch | Queenstown | Dunedin **Pacific Islands** Fiji | New Caledonia

**make  
everyday  
better.**